

BRIXWORTH BULLETIN

Including Creaton, Draughton, Hanging Houghton and Lamport

Issue No.4

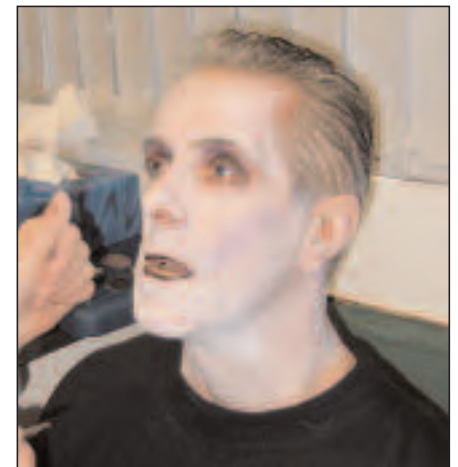
March 2005

LOCAL RESPONSE TO TSUNAMI APPEAL



Pantomime raises £2225 for appeal.

This amount was raised over the five performances from the ticket sales and the Drama Group would like to thank everyone who came to the pantomime and helped to make this possible. The audiences were terrific with full houses and standing room only on the last Saturday! Once again thanks to everyone.



MIKE CULVERHOUSE DRAMA GROUP

Make up time for Mike Culverhouse as Blackspider in the recent, very successful, pantomime at the Village Hall.



THE FOX IN THE POUND BOOKSHOP

The Pound House, Harborough Road,
Brixworth, Northamptonshire
Telephone 01604 880337
Opening hours: Tues. - Sat., 10 a.m. - 5 p.m.
If not in stock, we can obtain books within days.

On Boxing Day 2004, five Asian countries were devastated by a massive tsunami which was generated by an earthquake, reported to be 11 on the Richter scale, located off the coast of Indonesia. The exact death-toll will never be known, but the latest estimate is approaching 300,000. The survivors face the devastation of their countries.

The British public's response to the appeal for funds was immediate and unprecedented in scale and local organisations have raised additional money in a variety of ways. The Guides and Brownies, pictured above, held a 'Bring and Buy' sale on Saturday 22nd January and raised £300. The Drama Group have donated all their profits from the sale of tickets to their pantomime which amounted to £2,225. B.C.F held another 'Bring and Buy' sale on the 9th January raising £600, the scouts donated £89 from their funds and £108 was raised at the lighting of the beacon at the Church on New Year's Eve. Congratulations to the organisations for their efforts in raising so much money. There may be other local organisations which have raised money for this appeal and we will be very pleased to publish details in the next issue.

JACK AND THE BEANSTALK REVIEW

Just when it seemed my years were numbered and my days of glee were done, Fate awoke me from my slumber saying 'I know where there is fun'. Jack and the Beanstalk – What can I say? I've loved every minute of the part that I play. Tailor made for a wrinkle like me The Old Woman dances (Oh my poor knees!) They gave me a husband (I'm single you know). I bashed him a bit – well he called me a cow! How I loved the song and the dance; in the mood was terrific and everyone pranced Like we were all young – the Fairy did that And we were so happy for Princess and Jack. The beautiful Princess so tender and sweet Apricot found the right man to meet in Jack – so brave and daring and strong, their love lasts for ever, it never goes wrong. Dame Trot got her man I'm happy to say, She'll have to watch Billy tho', he does like to play. Blackspider – I'm not very sure if life will be good with such a mean cur. The young girl was lucky to escape from his clutch another minute and her time would've been up. The King and his Herald were regal and royal made all the right noises but didn't like trouble. Altho' the giant seemed ugly and fierce and scared everyone when he roared and appeared I wasn't afraid – I knew who it was under the mask - my elderly spouse whom I'd taken to task The Fairy was lovely as all fairies are, making our wishes come true, however bizarre. The sight of 8 tots dancing their best sequins a'sparkling and prettily dressed brought forth a great wave of audience love that lifted the spirits and hearts way above to the realms of pretend where dreams never end. The Butcher I liked but I think he was fake promised me sausages that he'd never make; He was too busy flirting with that dancing Queen to serve an old woman he'd rarely seen And what about Gertie, the cow with the most unlikely appendage but hey, who can boast? four lovely legs dancing all night, hard on the backs but oh what a sight! I can still hear the pain in the squawk of the chicken As she struggles to lay her egg in the kitchen; What magic she has to produce such a gem Would that I had a sackful of them. The story is now over, it's come to an end and in James the producer we all found a friend; calm and persuasive, he brought out the best and made sure our talents were put to the test. I'm sad it's all over, the dancing and fun but thanks everybody for keeping me young!

Jean McDonald



It's behind you! Oh yes it is...Oh no it isn't!

Over the last two weekends the Village Hall has been reverberating with these shouts! It was panto season again, after a few years' break, and Brixworth Drama Group were proud to present 'Jack and the Beanstalk'.

The traditional story had been adapted and produced by James Skeggs, who lives in the village and the story was true to the original – perhaps a bit of artistic licence with Brixworth on the Mould and references to Northampton.

All the performances were excellent with the highlights being the sinister Black Spider, played by Mike Culverhouse, Silly Billy, played by Tony Farrow, Dame Trot, played by Alec Hodgson and Gertie the cow, with Heather Pool as the front and Lesley Kelly as the back, who stole the show with impossible dance moves and the most doleful expression ever seen. Eileen Truby was also 'doing the impossible' by straining to lay a golden egg, the princess was very prettily played by newcomer Wendy Hammond and Fairy Dewdrop (Sue I'Anson) kept them all on the straight and narrow. No mean feat! No village panto would be the same without children and this was no exception. The Children of Cloudland entertained the audience with Scottish dancing and later were nearly eaten by the Giant! (Rescued in the nick of time by Jack, played by Robin Armstrong)

No production would be complete without stage design and the backdrops this year were designed by Mark Sharman, with the excellent painting being carried out by 8th Northampton Scouts.

All in all 'Jack and the Beanstalk' was well received and supported by the village – and people were heard asking whether there would be one next year. Let's hope so!

Caroline Monk

KPD AIRPORT SPECIALISTS

**Heathrow
Gatwick
Stansted
Luton
Coventry
East Midlands
Birmingham
Manchester
Liverpool
Norwich**

BOOK TAXIS EARLY FOR HOLIDAYS IN 2005

KPD EXECUTIVE TRAVEL
SIMPLY THE BEST WAY TO GO.

Local & Long Distance
Pre book Taxi Services
Office Hours: 8am - 6pm, Mon - Thurs.
8am till late, Fri - Sat.

Tel: 01604 882798
Web: www.kpdcars.co.uk

rs juggling

Offer circus skills, object manipulation and fun every Saturday morning 11 – 1 at the Brixworth Community Centre. In particular they do juggling of balls, clubs, rings and staffs, as well as poi unicycle, contact, diabolo, balance and lots more. Entry - £2



The photograph shows some of the club members practising their skills

BRIXWORTH LIONS

Santa visited Brixworth and the nearby villages in the run up to Christmas and was resplendent in a new sleigh built over the autumn by members of Brixworth Lions' Club. The collection was well supported and the Lions would like to warmly thank all those who made a donation. The money raised will be spent on local charitable causes.

Meetings during this year will be held in the Heritage Centre on the second Wednesday of each month starting at 8pm. If you are interested in finding out about Lions' Clubs either come along to a meeting or contact Peter Saxon (01604 882289) or Shirley Dann (01604 882877).

Photographs in this edition on pages 1, 2, 4, 6, 9, 11 and 12 were taken by Jane Neil

Karuna Clinic

Reflexology treatments for health and well-being.

- *Allergy related symptoms.
- *Hormone imbalances.
- *Digestive problems.
- *Migraine and headaches.
- *Anxiety and stress related symptoms.
- *Relaxation and stress relief.
- *Pregnancy care.

*Also offering:
*Bach Flower Remedies for support with emotional issues.
*Auricular therapy with Ear Candles, *Reiki Healing

Fiona Rice, MTR, BFRP.

Member of The Association of Reflexologists, Bach Foundation Registered Practitioner

Treatment room at:

64, Stonehill Way, Brixworth, Northampton.
Tel. 01604 889606.

Email: karunareflexology@hotmail.com

Brixworth Landscaping

For personal service, design & creation of your ideal garden, call Matthew Cox on:

Phone: 01604 882390
Mobile: 07702 317828

5 Burrows Vale
Brixworth
Northampton NN6 9US



S
A
N
D
S

SANDS HAIRDRESSING

1 KENNEL TERRACE
BRIXWORTH
NORTHAMPTON
01604 880484/880686
SANDELLIS@AOL.COM

A continuing commitment to style and elegance

LETTER TO THE EDITOR

Dear Sir

On behalf of all at the Brixworth Fire Station, we would like to thank the members of the public for their support in raising funds for the 'National Fire Service Benevolent Fund' over the Christmas period.

The Benevolent Fund provides a range of services that preserve the quality of life for serving and retired Service personnel and their families.

This year we raised £840. Our tour of the village was cut short on one particular night resulting from a fire call. If anyone would be interested in assisting us next Christmas in our collection, please contact us on telephone number 01604 881337. Additional assistance would enable us to cover a greater part of the village which has expanded somewhat over the years.

Firefighter Marcus Elms

WOMEN'S INSTITUTE

The National Federation of Women's Institutes celebrates its 90th birthday this year. Brixworth W.I. is proud to be one of the earlier members, celebrating its 83rd birthday this year.

They meet on the 2nd Tuesday of each month at 7.30pm in the Village Hall.

Their programme for the next few months

Mar 8th Festivals and Food

April 12th Oil painting demonstration

April 30th Coach outing to Spalding Bulb Festival.

May 10th Debate and vote on resolutions for national AGM in June.

**Contact numbers. Betty Howell 883615
Janet Hickman 880317**

MUSIC TUITION

Jonathan Harris
MSt(Oxon) BMus LGSM

*Piano tuition, music theory - all levels
GCSE / A Level support*



*For more information, call
01604 881182*

Plumb Cottage, High Street, Scaldwell, NN6 9JS



HAYWARD'S BARN CRICKET FIELD

POLICE REPRESENTATIVE'S REPORT TO PARISH COUNCIL 25th JANUARY 2005

Crimes reported in Brixworth during January 2005 .

- Brixworth Stores was broken into and cigarettes stolen.
- The café at Brixworth Country Park was broken into.
- An attempted burglary during the daytime at a house in the Ridings. The intruder was disturbed.
- A dwelling burglary in Windmill Close.
- A car owner drove off without paying after filling up with petrol at Blason's garage.
- Four vehicle crimes during the month.
- Five criminal damage incidents in the Ashway/Footpath leading to Eastfield Road.
- Two local youngsters arrested for damage to the library.
- One arrest outside the Co-Op in regard to a Dispersal order.
- Arrest of young people in connection with offences committed in Daventry.

C.B.O. Jackie Stublely

BURGLARY HELPLINE

Following last issue's report, please remember you can get your free burglary pack by phoning 01327 303189 or e-mail crimereduction-western@northants.police.uk



Boxing Day 2004 marked the beginning of the ground works around Hayward's Barn and although the area may presently resemble 'The Somme', the new cricket ground is under construction as predicted in the last edition of The Bulletin. A huge amount of earth is being moved – the gradient from top to bottom before work began was around four metres! Levelling should be complete by mid February and seeding for the outfield and the construction of the square will commence in the spring. The club is in regular contact with Dallas Burston with regard to the total project which includes the design and construction of the club house and the facility for tennis and bowls which, when complete, will be available for the residents of Brixworth and the local community. Watch this space and the development as progress is made. Regular picture updates and news on the site will also be available at www.brixworth.play-cricket.com. Views over the surrounding countryside and the reservoir are stunning - this will indeed be one of the best and most picturesque grounds in Northamptonshire.
Chris Timm

The Human Mechanics

Helen Mathieson MSc,BSc(Hons)Ost
Sam Ryall BSc(Hons)Ost



Osteopaths can be thought of as human mechanics. With 4 years training, we are specialists in understanding how the various parts of the body work together. Many people think we only treat back pain and sciatica, but in fact we treat the entire body — muscular strains, trapped nerves, shoulder, elbow, hip, knee and foot pain, headaches, neck injuries, etc.

Each consultation costs £30, with patients typically achieving 90% relief of symptoms within 3-5 sessions. We receive many patients through GP referral and as members of the General Osteopathic Council, we are accepted by all major insurance companies. For further professional advice, or to make an appointment, please contact us:

Brixworth Osteopathic Clinic
2 Church Street
01604 889241

Improve your quality of life – see an Osteopath

ChemDry Home Valet Service

PROFESSIONAL CARPET, UPHOLSTERY
AND CURTAIN CLEANING SPECIALISTS



Freephone
0800 980 6015

Proprietors
David & Bev Haynes

- * Most carpets dry in 1 hour
(can be walked on immediately)
- * No dirt attracting residue - carpets stay cleaner longer
- * Oriental rugs a speciality
- * Dries odour free
- * Specialists in carpet and upholstery protection
- * Upholstery and curtains restored to their original glory
- * Leather and Vinyl specialists
- * Professionally insured

For a free 'on site' quotation call

01604 621562



• BULLETIN BOARD •



FIRE SERVICE AWARDS

CHILDREN'S SOCIETY BOX COLLECTION

The final total for the Children's Society box collection this year was £763.36. Congratulations to Valerie Blason and her team in their efforts to support this charity.

DAVENTRY CHIEF EXECUTIVE

Steve Atkinson, Chief Executive of Daventry District Council from 1999 to 2004, has resigned to take up a post at Hinckley. It is proposed that his position will not be filled, but his immediate subordinates will rotate the responsibilities amongst them.

NORTHAMPTON & LAMPORT RAILWAY

Special Events for 2005 are:-

- 6th March – Mothering Sunday.
- 26th – 28th March – Easter Egg.
- 30th April, 1st & 2nd May – Day Out with Thomas.
- 28th – 30th May – Teddy Bear's Holiday.

BRIXWORTH CENTRE PRE-SCHOOL

Ofsted have awarded Brixworth Centre Pre-School the highest rating after their recent inspection. Congratulations to the staff on this outstanding result.

HISTORY SOCIETY

Thursday 17th March

Alice Hawkins: The life & times of a suffragette
Peter Barratt

Thursday 21st April

History in Stone: Brixworth Saxon Church
Dr Diana Sutherland

May--date to be confirmed

Brixworth Workhouse
Dr Elizabeth Hurren

Friday 29 July--Monday 1st August

4-Day European Trip based in Lille including visits to First World War Battlefields & Bruges. For bookings contact Paula Kirton, Tel:880033.

GARDENING CLUB

Meetings for the next three months will be held in the hall above the Brixworth Library at 7.30pm

- Friday 18th March – Mr Mark Bradshaw – Warden of Lyveden New Bield 'The Story of Lyveden New Bield' - with slides.
- Friday 29th April – Mr Geoff Stokes 'The History of the Allotment Movement'.
- Friday 27th May – Jean McDonnell – Continuing the theme of the Role of Women in Gardening – Vita Sackville-West 'The Making of Sissinghurst'

BRIXWORTH STORES

The Brixworth Bulletin is extremely grateful to the Patel family for their very generous donation to the running costs of the Community newspaper.

BRIXWORTH CEVC PRIMARY SCHOOL PTA EVENTS

- Saturday 5th March – Ice Skating 11am – 5pm in School Hall
- Friday 11th March, Easter bingo evening
- Saturday 25th June, Summer Fete
- Friday 15th July, Summer themed disco.

The PTA Committee would like to thank everyone who supported the Christmas Bazaar which raised £2,253 for the school.

NORTHAMPTON FIRE & RESCUE LONG SERVICE & GOOD CONDUCT MEDAL AWARDS

In our roles as Chairman and Lady of Daventry District Council, we were very honoured to be invited to the Northamptonshire Fire and Rescue Service Long Service Awards for 2005. The event was held at the Northampton Marriot Hotel on 27th January and the presentations were made by the Lord Lieutenant, Lady Juliet Townsend.

It was a wonderful evening and we were very proud to witness the award of a medal for long service to a Brixworth 'boy' Firefighter Stephen Skinner. Stephen joined the Fire Service at Brixworth in November 1984 as a Retained Fire-fighter and he also served two years at Rothwell Fire Station. When Stephen worked in Brixworth, he was on 24 hour cover, but then went on to limited cover when he went to work with his father in Northampton.

During his service, Stephen has also been a Sub-Officer but due to work commitments, he has gone back to being a Leading Firefighter. Stephen has been married to Angela for 17 years and has a son Callum aged 9 and a daughter Lucy aged 5.

We are sure you will all agree with us that the firefighters do a wonderful job and wish Stephen congratulations on his achievement and hope that he continues in this very valuable role.

Cllrs Frank & Liz Wigg

EXPRESSIONS

Longstanding Unisex Hairdressers

Special rates Tuesdays & Wednesdays for over 60s

New stylist, Vickie, joined the team on 1st January (Wednesdays only). Anyone booking with Vickie and producing this advertisement will get an extra 20% off during March 2005.

Also available in the salon:

- ▶ CHIROPODY
- ▶ NAIL EXTENSIONS
- ▶ PEDICURES
- ▶ WAXING

We look forward to your visit.

70 Northampton Road, Brixworth
Tel: 01604 880770

Market Harborough Operatic Society

presents



Based on a story & characters by Damon Runyon. Music & lyrics by Frank Loesser.
Book by Jo Swerling & Abe Burrows

Mon/Tue/Wed: £8; Thurs/Fri/Sat: £9
Concessions £6 (Monday only)

TICKETS NOW ON SALE!

from Harborough District Council Offices,
Adam & Eve St., Market Harborough
or contact the bookings managers on:

01858 462321 or 01858 462835

14th - 19th March 2005

Welland Park College, Market Harborough

FUTURE OF ADULT EDUCATION BUILDING



The derelict NCC Adult Education building, once part of the former Brixworth School, has been unoccupied for over a year and is showing the more obvious signs of deterioration. It is becoming a source of concern to the Parish Council and the neighbours, particularly the state of the former playground which can be seen in the photograph. The building was to be used by NCC Youth Services but due to lack of departmental funding, they were unable to take up occupancy.

Northamptonshire County Councillor Chris Millar will be holding exploratory talks with local groups in order to ascertain whether a feasible lease could be arranged.

CONTINUING by popular demand!!

AEROB 'N' TONE

(½ aerobics, ½ body toning)

WEDNESDAYS 8-9PM

Burn calories as well as toning legs, bums, tum & arms

BRIXWORTH LIBRARY COMMUNITY CENTRE

Classes are £3.50 & operate on a pay as you go basis
Suitable for beginners - various levels of intensity.
Please bring a mat or towel for floor work exercises
Enjoy your 1st class at half price!

For more details please contact
Wendy on 07743 485824

RED LION

Harborough Road, Brixworth

BED AND BREAKFAST

(Open all year, single, double & family rooms available, all with ensuite, televisions & tea making facilities).

TRADITIONAL PUB FOOD

SUNDAY LUNCH: (booking advisable) 12 - 3
LUNCH TIMES: Tuesday - Saturday 12 - 2
EVENINGS: Tuesday - Saturday 6 - 8

01604 880245

The Coach and Horses

a tavern of immense character and charm - over six hundred years old, with a cosy, blazing inglenook fire.

See our blackboards for freshly cooked dishes available daily.

Traditional Sunday lunch served from 12 onwards.

Open 7 days a week
Lunchtime: 11.00am - 3.00pm
Evenings 5.30pm - 11.00pm

**Harborough Road
Brixworth
Tel. 01604 880329**

LAMPOR T NEWS

Judith Davidson has written a piece for the Bugle and the Bulletin for the last six years. She and John have now moved to Pytchley Way in Brixworth after 43 years at Clint Hill Farmhouse, Hanging Houghton. She has written a mini-history of life and changes since 1962, but regrettably The Bulletin cannot find the room for such an interesting piece in this issue, though it will be covered next time. We are extremely grateful to Judith for her contributions over the years and hope they enjoy a different style of living in Brixworth.

Naturally we would like to obtain a replacement for Judith. If anyone in either Lamport or Hanging Houghton could help, please ring Harvey Fox on 01604 880337.

DRAUGHTON NEWS

The Trustees of The Draughton Club Room have applied for a grant towards the building and await a reply. The Harvest supper was very enjoyable and raised £167.50.

A 'litter pick' has been arranged for February 26th. It is a sad reflection on our society that one is needed!

The Gardening Group has organised a gamekeeper to give a talk on March 14th and Mike Davies from The Plantsman will visit on the April 11th.

I am sorry to report that The Rev Dr David Iziorho is leaving our benefice to become Vicar of Kempston in the diocese of St. Albans. David and his wife, Linda, leave with our prayers and good wishes for the future

Anne Block

COLEMAN'S BOUNCY CASTLES

Bouncy castles
all sizes and themes

RODEO BULL & SURF MACHINES

← FUN DAYS...FETES...OPEN DAYS →

BUNGEE RUN GLADIATOR DUEL WRESTLING RINGS

← Visit our website for more details and prices at www.kpdlmousines.com →

01604 882888

LOOK OUT FOR OUR OPEN DAY AND CHECK OUT ALL OUR NEW UNITS FOR NEXT YEAR.

COMMUNITY



GARDENING

In the last issue of The Bulletin, it was suggested that the community newspaper would sponsor a short gardening course at Moulton College for interested residents in return for a small amount of community gardening. A 3 week course has been arranged at the college commencing Monday 28th February at 7.30pm. The other two dates are the 7th March and the 14th March at the same time of the week. The course will be primarily plant propagation and plant maintenance. There are some spaces left and anyone who wishes to come along on all 3 dates or less, should contact Harvey Fox on 01604 880337. There is no charge to participants.

Mobile Beauty Therapy

BTEC National Diploma in Beauty Therapy



Waxing
Manicures/Pedicures
Facials
Massage
Make up



Eye Brow/Lash Tinting

In the comfort of your own home

For all enquiries & appointments
telephone Dawn on
07958 572802

CHAIRMAN OF DDC's SCOTTISH CHARITY DINNER

The Chairman of DDC's Scottish Charity Dinner held on 22nd January proved to be a great success.

The Charity Auction realised over £7000 towards Marie Curie Cancer Care.

Yours truly ended up purchasing a course with the Pitstop catering academy, which will undoubtedly improve my culinary skills! The only problem I have faced since then is the expectation of providing some delightful cuisine for a number of individuals!

Thanks must go to Mercedes Ilmor for sponsoring the whole event – another example of what a great asset they are to this village. Also I would like to thank Cllr Frank & Liz WiiG for initiating the event and to all those who contributed so generously to such a worthwhile cause.

Cllr Chris Millar

nutrition FIRST

Do you suffer from:

- Headaches/migraines
- PMS
- Fatigue/lack of energy
- IBS/digestive problems
- Blood sugar problems
- ME/chronic fatigue
- Eczema/skin problems
- Stress
- Arthritis/joint aches
- Depression
- Frequent colds/viruses
- Allergies

If so, then nutritional therapy could help you.

For more information, contact:

Sophie Driver (née Hughes),

BSc (Hons), Dip ION, BANT

Nutritional Therapist

01604 889137 or 07900 681781

sophieaehughes@waitrose.com



RECIPE

Perfect Penne Pasta!

- 2 oz butter (+ little extra to sweat spinach)
- 1 oz plain flour
- 1 tablespoon mustard powder
- 3/4 pint full cream milk
- 4 oz cheddar cheese (grated)
- 5 fluid oz double cream
- 4 oz cooked ham (chopped)
- 5 oz penne pasta (cooked)
- 5 oz spinach leaves
- 1 1/2 oz parmesan
- Nutmeg, salt and pepper

Make a roux with the 2oz butter and 1 oz plain flour and mustard powder. Add the milk (and now comes the part that takes the time but makes the difference) and simmer for 10 minutes, whisking continuously. Remove from the heat and stir in the cream, cheddar cheese and ham. Sweat the spinach in butter in a large pan for 3 minutes. Then add to the sauce. Finally add the pasta, pile whole mixture into a shallow dish and top with parmesan. Grill until well heated through and the top is slightly browned. Serve with a mixed salad. (Also freezes well)

Louise Cramp

BRIXWORTH YOUTH CLUB

The Brixworth Youth Club situated at 10 Ironstone Way (off Quarry Rd.) will open its doors for the first time on Wednesday 9th March at 7.30pm.

This is a special evening where we are inviting Brixworth youths from the age of 11 to come along WITH PARENTS if possible, to view what we have on offer. It is important for parents to become involved as we desperately need volunteers to run the youth club and without them, it will not go ahead.

the village dental practice

Visit your local friendly dental team
for a healthy mouth and
smile with confidence.

All patients are warmly welcomed.
Please 'phone or call in for a free consultation.

opening hours:

monday & friday 8.30 – 12.00; 1.00 – 4.30

tuesday & thursday 10.00 – 1.00; 2.30 – 6.30

wednesday 8.30 – 12.30; 1.30 – 5.30

spratton road, brixworth
telephone 01604 880293

ACTive

PERSONAL TRAINING
FITNESS CONSULTANT, SPORTS THERAPY
PILATES INSTRUCTOR



HOW ARE YOU FEELING?

Do you need the motivation to lose weight, tone up & get fitter?
Without the hassle of travelling to a gym?

**TRY A PERSONAL TRAINER
OR JOIN ONE OF OUR
POPULAR FITNESS CLASSES
IN BRIXWORTH**

DAY	TYPE	VENUE	TIME
Monday	Circuits	Village Hall	7.00 - 8.00
Monday	Circuits	Village Hall	8.00 - 9.00
Weds.	Pilates	The Centre	6.15 - 7.00

Classes are mixed and for all levels of fitness.

PLEASE RING FOR FURTHER INFORMATION.

Tel: 01604 880126

Mobile: 07732 165546

e-mail: info@act-ive.com

ALL SAINTS' CHURCH LIGHTING



CAMERA CLUB



An additional external light has been added to the existing five spotlights which illuminate the spire and southern wall of All Saints' Church. Previously there was a curious inverted shadow above the spire when the lighting was switched on, but with this additional spotlight the church is more uniformly lit. The lights are not used during Lent but residents will be able to see the full effect of the extra lighting after that period. The Friends of All Saints' Church provided the funding, helped very generously by Liz Morgan who made a substantial contribution.

The club was founded in 1995 following the Village Appraisal survey in which 195 people expressed interest in a photography organisation. Monthly meetings were held initially at the Sports Pavilion and, as numbers fell, the Heritage Centre. Up to 20 members were engaged in a range of activities and entertained by a variety of speakers until numbers eventually dwindled to just three of the founder members – but that was not the end!

Regular monthly meetings have continued at members' homes with a range of indoor photography including studio portraiture, darkroom techniques and still life. Outdoor activities involve group visits to local places of interest as well as work on set subjects for individual portfolios. Mid-month meetings are held at The Coach & Horses or at The White Horse at Old. The collectors regularly attend local camera fairs at Wolverhampton and Cambridge in search of those elusive bargains and to learn more about our photographic heritage.

The results of our work for the year are usually displayed at the Community Centre during the spring. The exhibition has attracted one or two new members during the last year.

Digital photography has added a further dimension and members are becoming increasingly familiar with imaging software and scanning techniques. Although digital has virtually replaced the darkroom, members still retain the equipment and enjoy an odd session of 'wet' printing.

Meetings are held on the first and third Tuesdays of the month. The current programme is available from Keith Parrott - Tel 881390. Photographs of weddings and special occasions can be arranged with Stephen Wagstaff – Tel 881402.

BSP PROPERTY MAINTENANCE

7 Northampton Road
Brixworth NN6 9DX

- General carpentry
- General plumbing
- Laminate & hardwood flooring
- Doors & windows



- Plastering, painting & decorating
- Ceramic tiling
- Kitchens & bathrooms
- Guttering & roof repairs
- Fencing

All works undertaken by fully qualified tradesman with 15 years' experience

No job is too small. For free, no obligation estimates,
please call Bryan or Stacey in Brixworth on:
01604 880301 or 07963 768250 or 07941 750288

Bed & Breakfast *Rookery Cottage Studio*

Maddy and Pete Kottler are open for
B & B, with a charming self-
contained bedroom and en-suite,
attached to Pete's new studio.

Rookery Cottage
Church Street
Brixworth NN6 9BZ

01604 883782
pkottler@aol.com

BRIXWORTH CENTRE UPDATE



The Brixworth Scouts and Leaders would like to thank everyone who kindly donated to group funds during our Carol singing on Wednesday December 15th. We had intended to put the money towards purchase of camping equipment etc. However, on returning after the Christmas break the Scouts took a vote and unanimously decided to donate all the money raised (£87) to the Tsunami Earthquake Appeal. As a Group we decided we could not spend this money when the needs of others were so much greater, we hope that everyone who kindly donated to the group is in agreement with this decision.

BRIXWORTH CENTRE NEWS

Trafalgar Day

It is anticipated that the nation will unite in October 2005 to celebrate the 200th anniversary of the Battle of Trafalgar. Beacons will be lit across the country, church bells will peal and festivities will take place in homes, pubs, schools and public halls throughout the United Kingdom.

Brixworth's focal point for celebration will be The Centre in Church Street. The All Saints' Church bells will be rung and the village beacon lit. Youth groups like scouts, cubs, guides and brownies are already planning their individual contributions.

A sub-committee, under the chairmanship of Sue Verallo, is being formed to co-ordinate a variety of celebratory events for the week-end of 21st – 23rd October. She is keen to hear from any village organisations or individuals who would like to help to make this land mark date in British History truly memorable. Sue's telephone number is 01604 881422.

Short Mat Bowls' Club

The club now has 40 members and is planning to hold 2 sessions per week on Friday afternoons and evenings. Opening night takes place on Friday 4th March at 7.30pm. Stan Hattersley (Chairman) has borrowed two mats from the Northants Short Mat Bowling Assoc. – when funds permit, the club will purchase its own. Brixworth Parish Council has donated funds to buy 8 sets of bowls. Mr and Mrs F WiiG have also generously made a personal donation to the club.

A Sad Note

Youth vandals recently smashed the Centre's windows resulting in £700 worth of damage. The culprits were arrested and the youths admitted their guilt. This is not the first incident of its kind suffered by the Centre and angry committee members wish it to be known that they are exploring every legal means at their disposal in order to obtain financial recompense from these criminals and/or their families.

Looking for reliable local legal services?

Welcome to the partnership

borneohughesmartell
Solicitors

8 Notre Dame News | Northampton | NN1 2DG
Phone: 01604 824822 | www.borneohughesmartell.co.uk

Could your computing skills do with a boost?

Jargon-free and friendly tuition is available for beginners and for more experienced users, in your own home or office, on a one-to-one basis.

Work at your own pace to improve your general computing skills, handle e-mails & the Internet, use word processing & other software and download, organise & enhance images from your digital camera.

And for business users, Sage Accounts & Sage Payroll.

For more information, contact

George Hammerschmidt

t: 01604 880212

e: ham@nildram.co.uk

PARISH COUNCIL CHANGES

The Parish Council have now a full complement of Councillors, eight elected unopposed in June 2004 and six co-opted since then. The last three are Paul Savage, Simon Killick and Chris Timm. Steve Mabbutt resigned as Chairman of Planning in December and Kath Redley has replaced him. Frank WiiG resigned as Chairman of Finance in October and was replaced by Ian Barratt.

Gardeners World

(Northampton)

Landscaping, Design & Maintenance

Is your garden in need of a tidy or complete make-over?

Specialist service at competitive rates (with FREE estimates) for:

* Patios	* Decking	* Garden clearance
* Planting	* Hedge trimming	* Pruning
* Turfing	* Borders & Pots	* Mowing & maintenance
* Servicing all of Northamptonshire		* Full design service available

Tel: 0800 389 2068 Fax: 0870 442 2528

email: gardenersworld@btinternet.com

10% discount on production of this advert - conditions apply



KEEPERS OF THE VILLAGE PURSE

The precept for Brixworth Parish Council is £92,494.00 for 2005/2006, an increase of 6.25% over the 2004/2005 precept of £87,052.72.

Comparing budgets for 2005/6 and previous year, the Individual Budget Totals were as follows:-

	<u>2005/2006</u>	<u>2004/2005</u>
Expenditure		
Salaries	£42,020.00	£40,043.72
Finance/Admin	£12,100.00	£15,535.00
Highways/Environment	£7,000.00	£6,800.00
General Purposes	£4,400.00	£3,750.00
Recreation & Amenities	£22,700.00	£29,000.00
Improvement & Develop.	£1,850.00	-----
Ashway Development	£15,500.00	-----
Amenity Development	£5,000.00	£3,000.00
Total Development	£110,570.00	£98,128.72
Income		
Bank Interest	£2,000.00	£1,000.00
Sports Clubs	£3,000.00	£3,000.00
BCF Coffee Shop	£1,500.00	£1,500.00
Community Centre	£6,000.00	£4,500.00
Saxon House grass cutting	£826.00	£826.00
Pocket Park grass cutting	£250.00	£250.00
Total Income	£13,576.00	£11,076.00
Precept for 2005/2006		
Expenditure	£110,570.00	£98,128.72
Less Income	£13,576.00	£11,078.00
Less Transfer from 2004/2005	£4,500.00	
Precept	£92,494.00	£87,052.72

RESERVES AT END OF DECEMBER 2004

Current Account	£8,030.64
Capital Reserve Account	£153,506.49
Less Cheques outstanding	£888.26
Balance carried forward as at 1.1.05	£160,648.87

ASSISTANT MINISTER FOR BRIXWORTH CHRISTIAN FELLOWSHIP



Now meeting at the Brixworth Library and Community Centre on Spratton Road, BCF has been growing steadily since it began in the village hall over 15 years ago. Last year, with between 70 and 80 regulars on a Sunday, the fellowship had grown to a point where the current pastor, Phil Walter, was finding it difficult to fit everything in that needed to be done.

From 1984 to 1998 Ian Rees was a minister in the South West, who moved to Northampton in 1998 to work with the European Christian Mission. After nearly 6 years with the mission, during which time he served as its British Director, and attended BCF, Ian felt it was time to leave and started working with Phil Walter on a part time basis – usually Thursdays and Fridays – but you will see him around more than that! His duties involve assisting Phil in most areas of church life, admin, planning, pastoral concerns and taking services. His vision is to see the church have an increased presence in the village and be a greater blessing to the community.

Ian is married to Lynn, who works as a member of the Northampton General Hospital Breast Screening team and they have a son and two daughters aged 18, 16 and 12. Say hello to him if you see him – it will probably be somewhere near the Olive Branch!

DEEP DRY CLEANING AND THE PROTECTION OF CARPETS, UPHOLSTERY, CURTAINS, LEATHER AND MATTRESSES IN THE COMFORT OF YOUR HOME



SPRING IS COMING, IS YOUR HOME GOING TO BE READY?
Book early and beat the rush

- * Simply have two rooms of carpets professionally deep dry cleaned by the **Stainbusters** at the special price of £96 and the **Stainbusters** will then clean your landing, hall & stairs for **NOTHING!**
 - * Plus a FREE bottle of Stainbuster 3 Spot & Surface cleaner worth £9.00
- Offer applies for 1 average sized landing, 1 average sized hall & standard 13 stairs, for bookings made by 20th June 2005

For a fully guaranteed service at a guaranteed time and at a guaranteed price, call **FREE** on
0800 137772



General bookings 8.30am - 5.30pm Mon-Fri 9am - 1pm Sat	Emergency 24hr helpline 0800 137772 No call out charge Minimum booking £45
--	--

MYLES and SIMS
Architects

Contact us for all your building design needs.

No fee for a preliminary consultation.

3 Kennel Terrace
Brixworth Northampton NN6 9DL
Tel: (01604) 880294 Fax: 881667



The local pharmacy is now being jointly managed by Mrs. Nicola Illingworth and Mrs. Susan Elmore.

Mrs. Illingworth has lived in Brixworth for 14 years having previously worked at Northampton General Hospital and has done regular locum duties for Mr. Powdrill. She is well known to regular users of the Pharmacy for her friendly help and advice.

Mrs. Elmore has also worked as a locum pharmacist before in Brixworth and has worked in hospital pharmacy. She has an abundance of experience in community pharmacy having run her own business in the past.

Mr. Powdrill (60 in May last year) remains the director of the business but has decided to ease his work-load not only to give more time to family and recreation, but also to resume a part-time career running seminars on 'Leading a Healthy and Balanced Lifestyle'.

I am confident that the pharmacists and my excellent staff, who are all continuing to pursue further education in pharmacy, will provide Brixworth with an on-going first class service.

Rodger Powdrill

ROGER CORFE



A Service of Thanksgiving was held on the 13th December 2004 for the life of Roger Corfe 1912 – 2004. The address was given by Canon Brian Stevenson, a friend of the family. Roger Corfe was well known as an artist in watercolours and oils, one of his watercolour paintings is shown above. He exhibited in many galleries and his works were collected by many people. He will be much missed by local residents, not only for his artistic talents but also for his unfailing good manners.

 <p>Public opening times 2005 House and Gardens May 2nd to the end of September</p> <p>May & June Weds & Thurs 2.00-5.30pm</p> <p>July, August & September Thurs 2.00-5.30pm</p> <p>Plus Bank Holiday Mondays (May - September) 2.00-5.30pm</p> <p>Winner of the HHA/Christie's Garden of the Year Award 2000</p> <p>Refreshments * No dogs</p> <p>tel 01604 505 808</p>	<p>COTTESBROOKE HALL GARDENS</p> <p><i>Huge 300-year-old cedars, magnificent double herbaceous borders, pools and lily-ponds, rose borders and individually planted courtyards, and a magical Wild Garden.</i></p> <p>Season tickets now available</p> <p>May & June Tulips & alliums Rhododendrons, magnolias, wisteria & acers</p> <p>June, July & August Fabulous containers Agapanthus</p> <p>End of season Acers & autumn colours</p> <p>Plants for sale</p>
---	---

Debra A. Perkins MPS Pract

**Qualified Chiroprapist
25 Years Experience**

*Private Treatment In
Your Own Home*

Day & Evening Appointments

**Tel: 01604 847744 (Evening)
Mobile: 07764 158555 (Day)**

Merry Tom Farm, Merry Tom Lane, Chapel Brampton NN6 8AQ

**RAYBELL & SONS
SURFACING LTD**

DOMESTIC & COMMERCIAL
FREE QUOTATION · NO JOB TOO SMALL

TARMACADAM, BLOCK PAVING,
SLABBING, PATIO, DRIVES ETC.



Unit 3, The Old Brickworks, Harborough Rd., Pitsford, NN6 9AA
TEL: 01604 883688; FAX: 01604 883533



In March 2003, Rachael Warwick applied for planning permission to site a small farm, garden nursery and greenhouses on 4 acres of land along the Holcot Road (See photograph above) for use as a day-centre for adults with learning difficulties. As reported in the April 2003 issue of the Bugle, Rachael's motivation is personal – a close member of her family with learning difficulties benefited so much from a similar country-based day care scheme.

Planning permission was given in June 2003 with 10 conditions. Condition 7 was that this permission be personal to Rachael Warwick and if the permitted use ceases, the building(s) hereby permitted shall be demolished and removed from the land within 2 months. The reason given by DDC at the time was as follows: 'The proposal involves the provision of new building(s) in open countryside contrary to the provisions of the Development Plan and they are only permitted on strong compassionate grounds that there is an overriding need for this use and the personal assurances of the applicant.'

In November 2004 Rachael Warwick applied for alteration or removal of Condition 7 for the following reasons

- This condition is preventing the building of Brixworth Nursery Farm, a development project supported by over 500 local people.
- Investors cannot realistically be expected to risk investment when in the event of Rachael's death this **Five Hundred Thousand Pound** facility would be destroyed.
- Demolishing the facility would leave 60 people with learning difficulties the task of finding alternative day care facilities.
- Demolishing the facility would result in 15 people losing their jobs.

Immediately prior to the DDC Planning meeting of 19th January 2005, the Report Reference: P020205/1, the Officers' advice was refusal for the following reason.

The proposal is contrary to the Development Plan and was only allowed on strong compassionate grounds as an exception to policy and on the personal assurances of the applicant. Should the applicant no longer be involved with the project, the Local Planning Authority wish to have the opportunity to reassess the need for the continuing exception to policy in the light of the circumstances that pertain at the time.

However at the meeting the Officers withdrew their objections on legal advice and the Council accepted the application.

G.HAMSON & SON
GARAGE SERVICES

Customer Breakdown Service
General Repairs and Servicing of Cars and Commercial Vehicles
Vehicle Steam Cleaning and Wax Oil Treatment
Suppliers of Pre-packed Solid Fuel
Air conditioning service now available

CLASS 4 & CLASS 7 M.O.T. TESTING

Harborough Road Garage, Brixworth
Telephone: 01604 881098



Brixworth Travel Club now operate the following regular journeys :

Each Thursday afternoon:

From **Scaldwell, Old, Walgrave, Harrington and Holcot to Brixworth**

From Creaton and Spratton to Brixworth (Brixworth residents may visit these villages) Other villages on request. Cost £1 return.

Each Friday Afternoon:

From all villages to **Kingsthorpe and Sixfields**. Cost £1 each way.

Second Tuesday of Each Month:

Leave Brixworth 10am. to **Daventry**. Cost £4 return. Leave Daventry 2pm. All villages served on request.

Third Tuesday of Each Month:

Leave Brixworth 10 am. to **Rugby**. Cost £4 return Leave Rugby 2pm. All villages served on request.

Last Friday of Each Month:

Leave Brixworth 10 am. to **Kettering and Market Harborough**. Cost £4 return. Leave Kettering 2pm. Market Harborough 2.30pm. NB. If more than 15 passengers, two separate journeys will operate to each destination and a revised timetable advised.

For further details and to make bookings please contact **Peter Oliver (01604 881012)** or **Olive Branch (01604 889030)** with 2 days notice if possible to guarantee a place. Cancellations within 24 hours to **David Matthews (01604 882499)**

~~CORRECTIONS & CLARIFICATIONS~~

In the last issue, the article on Knotting and Knitting contained two inaccuracies for which we apologise.

Harold and Ethel have twins, a boy and a girl. – not twin daughters.

Harold was brought up in an orphanage at Kirkham not Chiltern.

Another informative issue of the Bulletin, but could I please ask you to ensure that our surname is spelt correctly in any articles. i.e. Wiig NOT Wigg. We are extremely proud of the Norwegian heritage and were very pleased when the Bugle quite correctly always autographed the name WiiG

Many thanks

Liz WiiG



BRIXWORTH FOOTPATHS

Freedom to roam



COUNTRY EYE



IMMIGRANTS RETURN TO EASTERN EUROPE



It is a little surprising that in the Parish of Brixworth, nominally a rural village, there are very few designated footpaths which extend into open fields. Of course, there are the Brampton Valley Way and the walk around the reservoir but both tracks have a gravel base and are therefore not true countryside paths.

To the north-west of the village, there is a bridal path CG11 which leads to a dead-end after 500 yards and a footpath CG9 which skirts the sewage works and joins the Creaton Road again opposite the Pytchley Hunt kennels. To the west, there is CG8 which runs from Saneco Lane to the Spratton Road and there is CG1 which skirts the Recycling Centre from Scaldwell Road to Holcot Road across fields past Grange Farm and then joins CG12 which runs north from the reservoir to the boundary of the village near Laundon's Lodge. To the south, there is a bridal way down Merry Tom Lane which is gravelled. There is also CG5 which runs from the Country Park to the Bypass which is in reality a short link between the village and the Country Park.

Out of these footpaths, only CG9, CG8 and CG2 could be classified as country footpaths.

For many years, there was a footpath through the fields from Home Farm in a northerly direction which was well used by Brixworth residents, but this route has been closed by the owner on the grounds of security and

safety. The real reason for closure was village youths causing a nuisance. Peaceable walkers have been penalised for the youth's misdemeanors, even though it is permitted to travel along CG10 which goes west/east in this area where training of forklift and crane drivers takes place, but it is not possible to walk northwards where one would be swiftly in open fields. The owner of Home Farm would be providing a much needed service to the village, if he re-opened the north walk on a trial basis.

Freedom to Roam

The Countryside and Rights of Way Act received Royal Assent on 30th November 2000. The new right of access did not come into force immediately, as it was necessary first for all open country and registered common land to be mapped. Our region will have the conclusive map available by spring 2005 and access can commence in October 2005. When the conclusive map is available, it will be possible to view the map by logging on to the Countryside Agency, West of England Region. (not a mistake).

The local Ramblers Association are very active in this area. On Sunday 9th January 2005, 38 members of Northampton Ramblers Association met at Brixworth Church to walk a route to the west of the village. Anyone interested should contact Northamptonshire Ramblers Association, telephone number 01604 812556.

Right now the annual exodus of thousands of immigrants from our district is well under way. Having spent the winter in good quality accommodation, spending a few weeks here, a few weeks there, they are now on their way back to their summer home - the place where they were reared. Luxury places to eat have included farmers' fields, school play-grounds, parks and above all rubbish tips. Here they would have foraged for delicacies like worms and other soil creatures, crisps, bits of sandwiches and other items dropped during the school breaks; and on the tips anything edible - fish heads, meat scraps, plate scrapings, ice cream and sweet wrappers, the list is endless.

Doubtless you will have guessed that I am referring to the tens of thousands of gulls that annually turn up in our parish, from the end of July onwards, and staying until the early months of the following year. Commonest among them is the black-headed gull. Seen close to, it is a handsome bird, white and dove-grey, the adults with a black tip to the tail, and with blood-red legs and black-tipped beak. Curiously, when it arrives here, most adults have white heads, with just a greyish smudge behind the eye. Only later, around the turn of the year, does the rich, deep, chocolate-brown, not black, hood, from which it gets its name, appear. This dramatic change in appearance happens when the tips of the head feathers fall off to reveal the dark colouring below.

Their raucous ear-splitting cries can be heard from the St. David's Rec. as they gather in hundreds just after first light. As many as 15,000 have been estimated to roost nightly at the reservoir at peak times. They far outnumber the other gull species that are found there. In increasing size, but decreasing abundance there are the common, herring, lesser-black backed and greater-black backed.

It is only really since the mid 20th century that gulls have been found inland in such numbers. This has been entirely due to what we have provided for them. They find rich pickings in man-made sites, as we have seen, and they seek a secure resting place on large sheets of water, top of their list being gravel pits and our drinking water reservoirs. It is perhaps an indelicate question but I am going to ask anyway. How many gulls does it take, washing and doing unmentionable things in the water at the reservoir, to pollute it? We have every reason to be grateful to the water engineers that the water coming out of our taps is drinkable, or potable to use their words!



DRYSEAL LIMITED

FOR ALL GENERAL BUILDING AND JOINERY WORKS, EXTENSIONS AND CONVERSIONS

Also approved contractors for:

- Extensions
- Plastering
- Renovations
- Roofing
- PVC-U Fascias
- Woodworm
- Damp-proofing
- Ceramic Tiling

21 Breach Close, Brixworth NN6 9HT

Tel/Fax 01604 881715; Mobile 0771 230 9914

PLANNING STATUS REPORT

TEXACO GARAGE SITE DEVELOPMENT

Planning consent for the building of 13 dwellings was granted in the summer of 2004 subject to signing of a 106 agreement in connection with the bus stop. This 106 agreement has just been signed. The Brixworth Bulletin spoke to Mark Sterling, representative of the 1st London Investment Group, and he said that he had no information regarding a build commencement date nor had he any information as to whether the group was intending to submit a planning application regarding the remainder of the site.

PLANNING INSPECTOR'S DECISIONS

DA/2004/0317 & 0359B The Grange, Kennel Ter. Convert detached building to leisure complex with new indoor swimming pool, and build an extension to existing house. Permission not granted for the leisure complex but was given for extension to existing house.

DA/2004/0139 GWJ Contractors, Land at Clearview Farm, Station Rd. Outline application for change of use from part agricultural/part haulage contracting/civil engineering contracting to residential. Appeal dismissed.

RIGIFLEX SITE DEVELOPMENT

Haddon Developments has submitted a revised application for development of housing on the Rigiflex site.

John Willcox of Haddon Developments said, 'I have tried to reflect the comments made at the committee meeting held on the 1st December 2004.'

The new scheme includes the following changes:-

- No three storey development to Northampton Road and Froxhill Crescent
- Numbers reduced from 41 to 34 units
- Greater variety in the mix of dwellings
- Affordable Housing to include provision of some rented units.
- Parking ratio increased to give 150% including 17 visitor spaces.
- Increase in road width and the addition of one footpath to give a footpath either side of the road.
- Access road surrounds to be of higher specification including block pavior/granite setts to give a more village/rural feel.
- Retention of the majority of hedge to Froxhill Crescent and several of the existing trees on the site.

John Willcox hopes that the revised scheme would go before the DDC Committee no later than 16th March.

REF NO. & DESCRIPTION OF APPLICATION	P.C RECOMMENDATION & D.D.C. DECISION
DA/2004/1178 Park Farm, Spratton Rd. Change of use of part of farmyard to B8 (storage) use (retrospective)	PC 15/9 No Objection. DDC Approved.
DA/2004/1179 Park Farm, Spratton Rd. Change of use of part of farmyard from agriculture to mixed use comprising B1c, B8 and agriculture (retrospective)	PC 15/9 No Objection. DDC Approved.
DA/2004/0707 29 Burrows Vale. First floor extension and single storey rear extension.	Subject to Appeal.
DA/2004/1296 Rigiflex, Northampton Rd. Demolition of existing factory, to be replaced with three and two storey residential units.	PC 27/10 Objection. DDC Refused.
DA/2004/1306 24 Newlands. Single storey glazed extension to rear and new roof to outbuilding. New porch over front door.	PC 27/10 No Objection. DDC Approved.
DA/2004/1321 7 Poppy Leys. Ground and first floor extension to dwelling.	PC 27/10 No Objection. DDC Approved.
DA/2004/1327 21A Broad St. Alteration to garage to create room on top for use as home office. Two additional rear gables and sun room extension to existing dwelling.	PC 27/10 No Objection. DDC Approved.
DA/2004/1358 Mobile Home, Scaldwell Rd. Retention for further 2 years.	PC 17/11 No Objection. DDC Approved.
DA/2004/1380 20 Northampton Rd. Demolish existing garage & kitchen; replace with new kitchen & garage extension.	PC 17/11 No Objection. DDC Approved.
DA/2004/0007 NCC Countryside Services. Reed bed at Brixworth Country Park.	PC 17/11 No Objection. DDC Approved.
DA/2004/1398 79 Northampton Rd. Ext. to form dining room & w.c.	PC 17/11 No Objection. DDC Approved.
DA/2004/1445 79 Northampton Rd. New house with parking on part of garden to serve both houses.	PC 8/12 Objection. DDC Refused. Recommendation that condition be imposed to reinstate stone wall.
DA/2004/1412 24 Froxhill Cres. Conservatory to rear.	PC 17/11 No Objection. DDC Approved.
DA/2004/1446 (Amended) 25 Lesson Rd. Single garage and workshop with room over at rear of dwelling. Dorma window replaced with skylight.	PC 29/12 No Objection. DDC Approved.
DA/2004/1525 23 Eastfield Rd. Single storey front and two storey rear ext. plus replacement double garage.	PC 29/12 No Objection. DDC Approved.
DA/2004/1451 'Daisy Roots' 128C Northampton Rd. Change of use from retail A1 to business B1.	PC 25/1 Objection. Applicant has withdrawn application.
DA/2004/1551 Brixworth Nursery Farm, Holcot Rd. Alteration or removal of condition 7 of DA/2003/0337 (Personal to applicant)	PC 25/1 Objection. DDC Approved on legal advice.
DA/2004/1583 34 Froxhill Cres. Two storey extension to side of dwelling.	PC 25/1 Objection.
DA/2004/1475 Land adjacent to the Old Vine, Station Rd. Erection of a new dwelling (revised scheme)	PC 25/1 Continuing Objection.
DA/2005/0115 65 The Ashway. Extension to rear of dwelling and conversion of part of garage to bedroom for a disabled person.	PC 25/1 No Objection

PUBLIC CONSULTATION ON NEW RIGIFLEX SITE PROPOSAL

An extraordinary planning meeting will be held on Monday 28th February 2005 at 7.00pm in the Olive Branch Café (Library & Community Centre Spratton Rd.) to examine the revised application for the development of 34 residential units on the Rigiflex site on the Northampton Rd. Residents who have an interest in this application are invited to attend. Prior to the meeting, the application details can be viewed at the DDC Information Point in the Library Foyer.

BRIXWORTH UNDER 14s GIRLS FOOTBALL



Top Row Left to Right: Craig Holmes, Kate Markham, Poppy Holmes, Leana Doyle, Charlotte Toft, Mikaela Welford, Chloe Huntley, Lara Brown, Alice Beckley, Steve Pestell

Bottom Row Left to Right: Abi Fitzgerald, Meg Lugg, Chloe Linnell, Sarah Pestell, Jessica McFadyen, Kim Farrow

Following the report in the last issue, the team has progressed well, both in the league and two semi-final games beckoning. Amongst many stars Kim Farrow and Mikeala Welford have scored over 20 goals this season. It is not possible to mention all the players, but the 4-1 drubbing of premiership side Shrewsbury must be reported. Manager Steve Pestell has spent many hours working with the team and his efforts are bringing results.

GOLF SOCIETY

2004 proved to be another successful golfing year with high numbers playing at each venue. The end of year Disco/Buffer and Presentation Evening was held at Brampton Heath Golf Club. Golfer of the year was Andy Tebbutt, with Rob Bennett as runner up. The Captain's Shield was presented by Barry Nicholas to Geoff Green.

The George Clapton Memorial Trophy, presented by Deni Clapton was won by Ian Rice.

The A. G. M. will be held on Thursday March 17th at 8pm at the Sports Pavilion.

Venues for 2005 have been arranged for 8th April at Colmworth & North Bedfordshire, 10th June at Oundle, 12th August at Pavenham and 7th October at Stoke Albany. Anyone interested in joining ring John Wilson 880490.

BRIXWORTH CRICKET CLUB

The cricketing activity has re-commenced by way of indoor nets taking place every Sunday at 5.30pm. at the Moulton Leisure Centre. Senior and Junior sessions are available for existing members and any new members who are especially welcome.

Our quest for sponsorship is well underway and we would be delighted to hear from any local business who would like to be involved, either through direct sponsorship or placing an advertisement in our popular brochure, which is circulated to every house in the village.

Contact Chris Timm 01604 882591, Ray Foster 01604 881532 or Andy Bransby 01604 882622 (Juniors) for details of any club activity.

U 14'S JUNIOR FOOTBALL

They have continued with their good form in the league with no defeats and just one draw. They have 37 points, scored 88 goals and conceded just 12 in 13 games. With 8 games to play, they are hopeful of promotion but in the next few games, they are playing their nearest rivals which should decide the final positions. For the first time, they have two boys who have scored over 20 goals each.

Laura Gardner would like to thank all her customers of Sirens Lingerie for their support. Laura is expecting her second child in April and therefore she has decided to stop trading. The premises are available to be bought or to be let. Anyone interested please telephone 07740946589. The Bulletin team send her their good wishes.

ORGANISATIONS

The Bulletin has updated the Organisation List which was published in the Bugle in 2001. If there are any incorrect entries, please advise Harvey Fox and the Brixworth website will be altered by Caroline Monk who looks after the website.

BLASONS GARAGE AT THE HUB OF THE VILLAGE



Open: Mondays - Saturdays
Northampton Rd.,
Brixworth
Tel: 01604 880229



CONTACT DETAILS

Editor: Harvey Fox 880337
Sports Editor: John Blason 880229
Advertising Manager: Sue Verallo 881422
Advertising Design: George Hammerschmidt 880212
Distribution Manager: Jane Neill 880618
Treasurer: David Hymas 881755

Postal address:
The Pound House
Harborough Road, Brixworth NN6 9BX

or
The Bulletin Postbox at Brixworth Library

e-mail: brixworthbugle@aol.com

RAYBELL SKIP HIRE

Part of Raybell & Sons Surfacing Ltd.

- ☛ SKIP HIRE
2-20 cubic yards from £68 inc. VAT
- ☛ LOOSE AGGREGATES
1 - 5 tonne loads @ £30.00 per tonne
25 + tonne loads @ £25.00 per tonne

- ☛ BUILDING SAND, SHARP SAND, BALLAST, MOT, & 20mm GRAVEL

Minimum delivery - 1 tonne. Very competitive rates.
Delivery free locally, £5 out of town.
Credit cards welcome

Tel: 01604 883688; Fax: 01604 883533
Mobile: 07714 670700

BRIXWORTH RUGBY CLUB

Brixworth Rugby Club has undergone something of a change this season. Due to our policy of fun, social and traditional rugby, friends from other clubs have been playing for their own clubs on Saturdays, then turning out for Brixworth on Sundays. This has led to a unique atmosphere at our games. Often, players who have been opponents on Saturday, find themselves united under the Brixworth banner. The feeling has been that of a Barbarian style team. Results this year have included victories over Eastern District Warriors, St. Andrews' and Heathens. We still look forward to our first ever home game at the Ashway, but will be unable to play there until changing rooms exist. Anyone wishing to play for Brixworth, of any standard, will be welcomed. Please contact John Gillett on 01604 881045 if interested.

BADMINTON CLUB

The club has 28 men and 10 lady members with 7 teams in the Northamptonshire League.

The men's 'A' team has won all 8 of its matches so far, and with 2 to play, is top of division 3. The men's B team has won 6 out of 7 matches, with 3 to play. The other teams are having a mixed, but enjoyable season.

In common with many other clubs, we desperately need more lady members. Any ladies interested in joining should telephone our secretary, Anne Sharpe, on 781713, or our membership secretary, Geoff Dawson, on 883369.

BRIXWORTH RED LION FC

Out of the eight games played in the league, they have won 7 and only lost 1. They are third in the league but if games in hand are won, they would be 4 points clear.

In the cup competitions, they have a 100% record, in the semi-finals of the Parker Cup, NTFA Chronicle & Echo and quarter finals of the NFA Sunday Vase. Craig Spraggons has 24 goals, Matt Coleman has 14 and Adam Knight has 12. They would welcome extra support for the remaining crucial fixtures.

JUNIOR FOOTBALL CLUB UNDER 8s



Top: Matthew Bridges, Sam Lennon, Joel Burwood, Sam Hewitt, Joe Howarth, Teddy Cadby

Bottom: John Dalton, Tom Bowden, Greg Purcell, Jordan Davies, Matthew Procter

The Brixworth Juniors' Football Club U-8's started playing in the John Henry League in September 2004. At this age the league is split into two – the A and the B leagues – and being a newly formed team with no previous match experience, the BJFC U-8s were placed in league B. Despite brave performances, the U-8's lost their first two games but went on to win the remaining five games. After the last match in December, the U-8's were crowned League B Champions and gained automatic promotion to the A league for the remainder of the season. Well done to all the players and many thanks to all the parents for their continued support! Brixworth Juniors U-8's train on Sunday mornings between 9.30 and 11.00am on the Ashway playing fields. If you were under 8 years old on August 31st 2004 and you would like to join the squad, then call Tony Burwood (Manager) on 889009.

JUNIOR FOOTBALL CLUB UNDER 15s



Their premier league form to-date has been a bit erratic, but they are in a cup semi-final against Long Buckby on the 20th February.

Fund raising has enabled the team to make their first tour abroad to Valkenberg-Holland. Many thanks are given to W S Atkins for their sponsorship and to parents and supporters. Additional sponsorship is sought for the season's highlights on Video/DVD and full colour end of year books.

Andy Farmer Manager 01604 882032

**INDEPENDENT FAMILY RUN
FUNERAL DIRECTORS**

TOBY HUNT

FUNERAL SERVICE

*Providing a Complete Funeral Service on a personal Basis
Serving the County's Towns & Villages*

Northampton / Earls Barton

(01604) 811129

The Village Funeral Home, Earls Barton, Northampton NN6 0NA